



# MP-BEAMS

*Low Cost, High Strength Custom-Engineered H/I Beams*



[www.mpil.in](http://www.mpil.in)

**MULTICOLOR PROJECTS (INDIA) LTD.**

**Engineering the Earth**

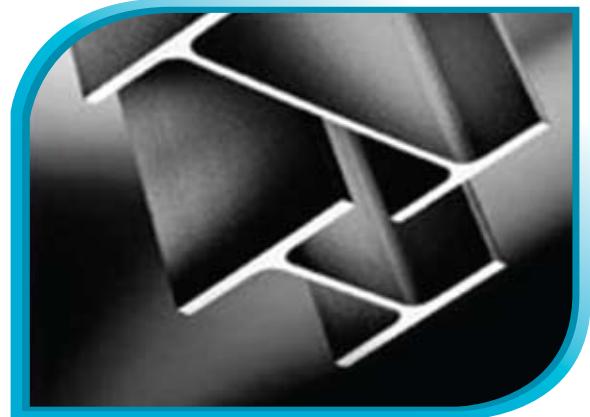
**Multicolor Projects (India) Ltd., an ISO 9001: 2000 accredited company,** specializes in manufacture, supply and erection of (PEB) pre-engineered steel buildings and pre-fabricated steel buildings. MPIL pre-engineered buildings are custom-designed to meet exact requirements using steel structures, plate welded H/I beams, profiled sheets, "Z" and "C" sections, steel decking sheets, single skin and insulated sandwich panels and other building accessories such as flashings, gutters, ridges, doors, windows and louvers.

### **MP-Beams**

MP-Beams are the state-of-the-art, plate-welded, custom-engineered H/I beams that serve as the primary members of steel structures, sheds and buildings. These beams and columns use high strength steel plates having high yield strength so as to make the structure light and economical. At MPIL, we are equipped with world-class plated welded beam line that consists of plate cutting, assembling, welding and straightening lines. Our production line has a capacity of producing approximately 40,000 tons of beams per annum. The plant is installed with latest machinery to ensure an efficient, speedy and streamlined production procedure. The MP-Beams bear a significant advantage in that they come in a wide range of flexible

sizes, are supremely cost-effective and offer cutting edge quality.

MP-Beams are extensively used for diverse applications in construction of multi-storey buildings, bridges, utility buildings and car parks, industrial plants and structures, material handling systems, railways, ports, harbors as well as airports.







## Advantages of MP-Beams:

- Enhanced life cycle and durability
- Time saving as pre-formed primary structural member significantly cuts down on the construction time
- Highly cost effective: more than 30% saving in steel
- Offer greater choice and flexibility
- Available in a wide range of sizes and thicknesses
- Facilitate bolted or welded construction
- Exceptional quality and workability
- Offer unparalleled opportunity for construction of fire-protected buildings

## Technical Specification:

Web Height: 200mm - 1500mm

Web Thickness: 6mm - 32mm

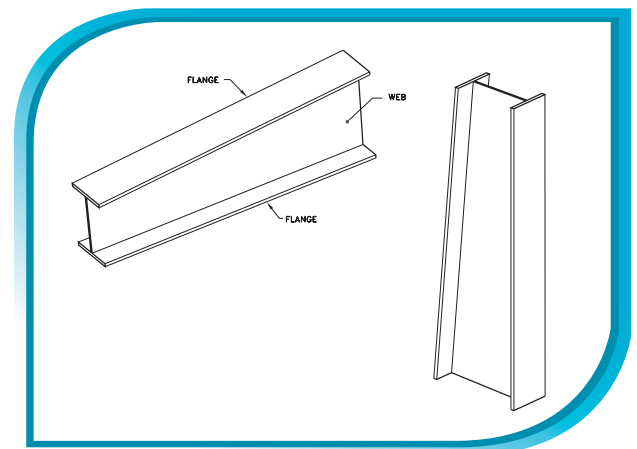
Flange Width: 200 - 800mm

Plate Thickness: 6mm - 32mm

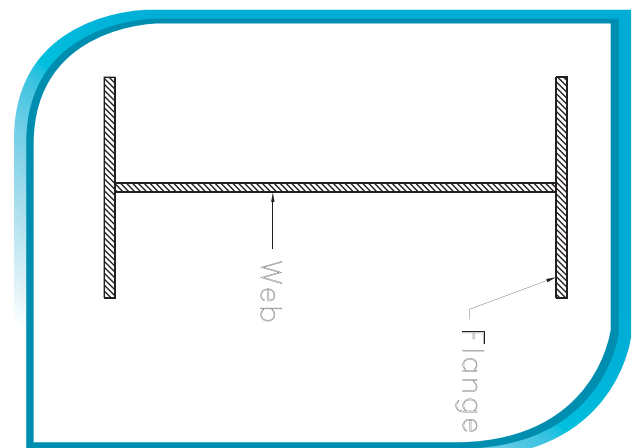
Length: Upto 12000mm

## Material:

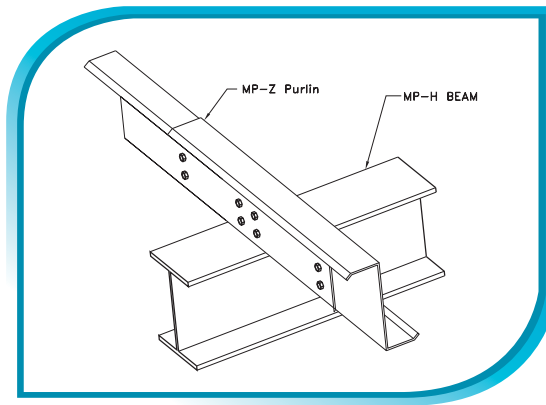
MP-Beams are fabricated from high grade steel plates conforming to IS:2062, ASTM A572 50, ASTM A570 50, ASTM A572M Grade 345 Type 1 or Equivalent with a minimum yield strength of 34.5K<sub>n</sub>/Sq.cm and are factory painted with a minimum of 25 microns DFT of Red Oxide Primer.



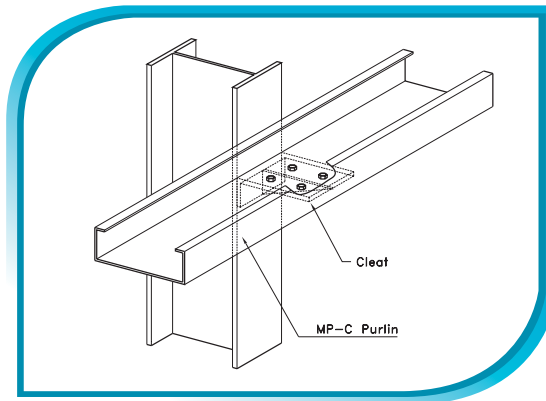
MP-Build Up Section



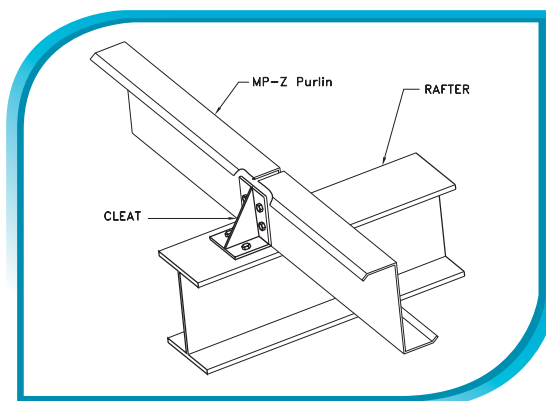
dummy copy



**Overlap Connection**



**Sidewall Girts**



**Butt Connection**



[www.mpil.in](http://www.mpil.in)

## MULTICOLOR PROJECTS (INDIA) LTD.

Corporate & Regd Office: 101, VTM Building Opp. Orkey Mills, Andheri - Kurla Road,  
Sakinaka, Andheri (E), Mumbai-400 072 (INDIA)

Tel: +91 22 28521573 28521577 Fax: +91 22 28521569 Email: [contact@mpil.in](mailto:contact@mpil.in)

Works: J-86, MIDC Tarapur, Boisar,  
Dist: Thane - 401 506, Maharashtra,  
Tel : 02525-270801/2, Fax:02525-270803

**Engineering the Earth**