

**MPIL STEEL
STRUCTURES LIMITED**
SOLAR SOLUTIONS

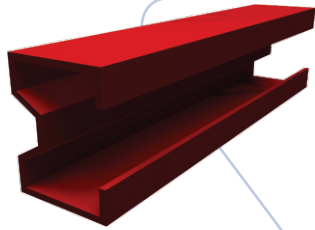
Optimizing
Sun's Energy



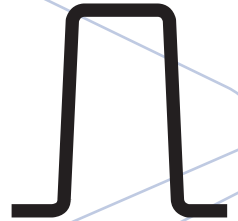
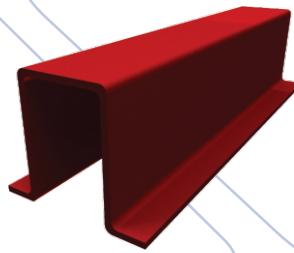
PRODUCTS

Our Solar Mounting Structures are designed and engineered for each customer's site specific conditions to minimize the field installation labor and require no field welding, drilling or other on-site fabrication.

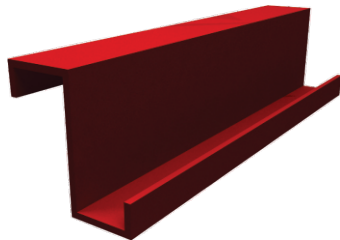
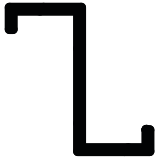
SIGMA



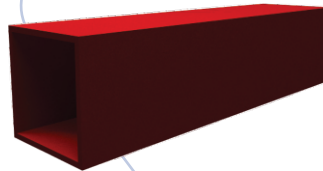
Omega



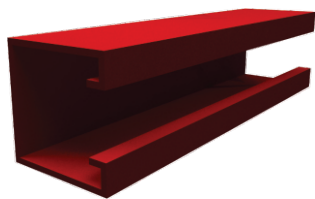
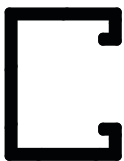
ZED



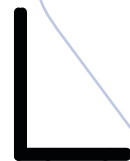
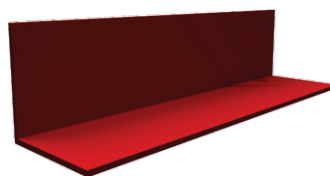
Square Pipe



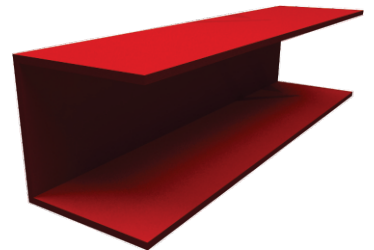
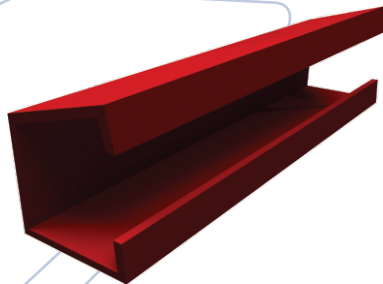
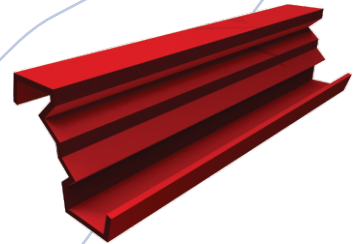
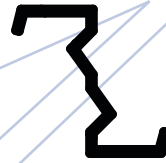
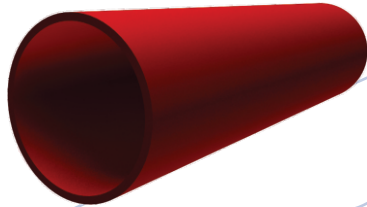
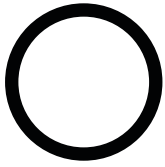
CEE



L Angle



PRODUCTS



Why MPIL Solar Structures

- Easy and fast to assemble: min number of components and accessories + integrated nuts (M8) for panel fixation
- 25 years of maintenance-free life
- Structures approved by IIT Mumbai for stability
- Cost effective (steel structures have the best stiffness/price ratio)
- Optimal surface treatment for high corrosive resistance (Hot Dip Galvanizing upto 85 microns)
- The structures are well protected against adverse climatic conditions.
- MPIL System is well designed, adhering to relevant Codal provisions, Aesthetically pleasing, well tested and proven.
- MPIL System is manufactured under controlled conditions, in “State-of-the Art” manufacturing systems, adhering to safety and superior quality parameters.
- Due to unique profiles the structures can very easily be erected at site with even unskilled laborers.

Features:-

- Suitable for flat and slightly sloped roofs
- Suitable for several module dimensions with a panel width from 950 to 1050mm
- Total dead of load of panels with steel structure and ballast below 10kg/m² of roof achievable
- Standard and angle regulation from 5° to 30°



MPIL Steel Structures Limited

Solar Solutions:

MPIL solar solution is engaged in manufacturing of Solar Panel mounting structures across India.

Our structures can take upto 160 panels at once. These pre-engineered structures are fast to make, economical and can easily withstand 25 to 30 years without any maintenance.

Our innovative technology and product is now so immensely famous that we are supplying these steel mounting structures for most of the solar energy projects in six different locations across India.

Not only are we humbled by our engineering and innovative team, we are really proud that we are providing the backbone for a renewable energy cause in India

Production Capacity

- Presently, MPIL has capacity to manufacture 50,000 tons of structural steel per year.
- With the inauguration of its second production unit in Karnataka by 2012, the production capacity will increase to 75,000 tons per year.
- At MPIL, our target is to achieve 100,000 tons per year in the next 18 months.



MPIL STEEL STRUCTURES LIMITED

Engineering the Earth

Corporate & Regd. Office : 6th Floor, Trade Star, B Wing, JB Nagar, Andheri-Kurla Road, Andheri (East) - Mumbai - 400 059
Tel.: +91-22-4260 7000 • Fax : +91-22-4260 7070 • E-mail : contact@mpil.in • website: www.mpil.in

Works : J-86, MIDC Tarapur, Boisar, Dist. Thane - 401 506, Maharashtra.
Tel.: 02525-270 801 / 2 • Fax : 02525-270 803

AIRPORTS • POWER PLANTS • INFRASTRUCTURE • SOLAR POWER • INDUSTRIAL SHEDS & WAREHOUSES