



S **M** **A** **R** **T**
SOLAR MOUNTED ADVANCED RENEWABLE TECHNOLOGY
BUILDING SYSTEM
Energy Efficient Building Solutions



**MPIL STEEL
STRUCTURES LIMITED**

The logo for MPIL Steel Structures Limited features a stylized 'M' shape composed of three geometric blocks: a grey block on the left, a red block in the center, and a blue block on the right. Below this graphic, the company name 'MPIL STEEL STRUCTURES LIMITED' is written in a bold, blue, sans-serif font.

At MPIL ...

...fortitude
is **red**,

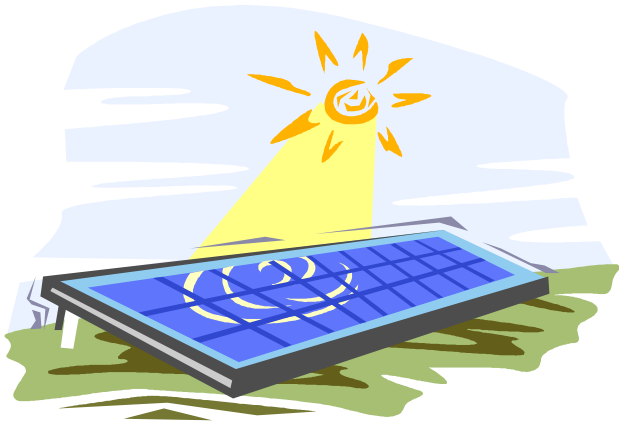
...efficiency
is **blue**

...outlook
is **Green**

Unique features of MPIL SMART Buildings:-

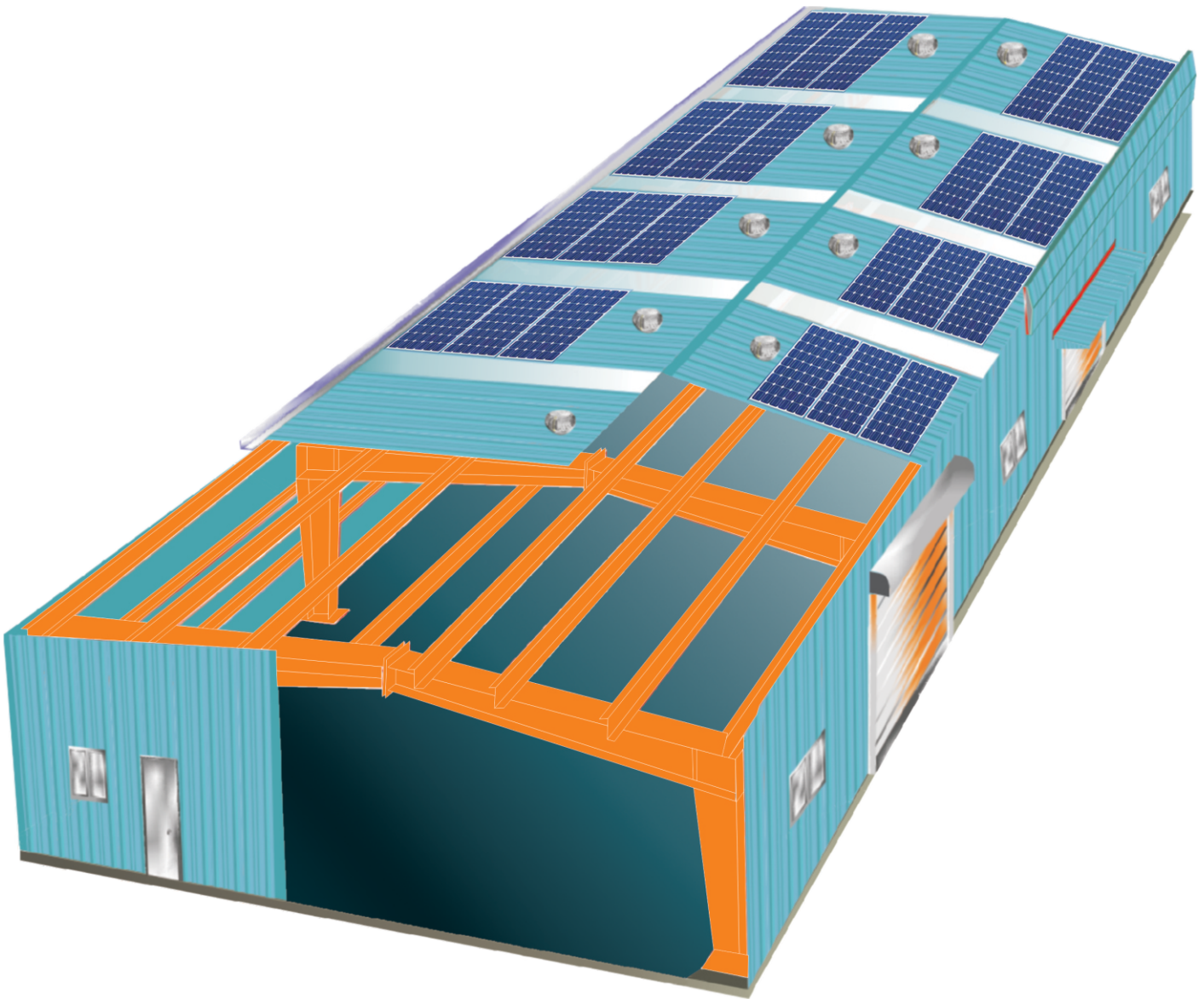
- ☀ Turnkey solution that incorporates PV installation on Pre-Engineering Buildings
- ☀ Inherently space efficient buildings now become energy efficient also.
- ☀ Valuable rooftop real estate put to best use
- ☀ Ideal for factories, industrial sheds, warehouses etc.
- ☀ Installation sizes greater than 150 square meters – equivalent to 20 KW or more
- ☀ Cost effective at Rs. 18000 to 20,000/- per square meter
- ☀ PV power plant will generate 200-230 kWh per square meter installed on average
- ☀ Power plant lifetime of more than 25 more years with warranties of 10 years or more
- ☀ Best in class system components ensuring safe, reliable, and effective operation for power plant life
- ☀ MPIL SMART Buildings are pre-qualified for LEED certification





Pre-engineered building that can serve as a solar power for captive generation of electricity.

Whether pre installed or retro fit, this power plant will seamlessly integrate with the internal power supply of the factory or warehouse.



Our EPC Partner:- _____

SuRe Energy Systems Pvt. Ltd .

SUSTAINABLE AND RENEWABLE ENERGY

SMART Pre-Engineering Buildings are Energy Efficient through-out:

Captive Energy Generation through roof mounted Solar PV's

Bare galvanized aluminum roof with high structure has high SRI value

Steel is 100% recyclable

Skylight roof helps to achieve a minimum natural daylight factor of 2%.

Natural Sunlight Polycarbonate sheets with 3%-5% of roof area

Raw material for fabrication bears 25% recycled content

LEED compliance of PEB's:

What is LEED:-

LEED (Leadership in Energy and Environmental Design) is the green building rating system developed by the US green Building System Council. In India, LEED is promoted and certified by the IGBC (Indian Green Building Council):-

PEB's are innately green hence when you build a factory or warehouse using the MPEB Technology. You are pre qualified to obtain LEED certification



MPIL STEEL STRUCTURES LIMITED

Engineering the Earth

Corporate & Regd. Office : 6th Floor, Trade Star, B Wing, JB Nagar, Andheri-Kurla Road, Andheri (East) - Mumbai - 400 059
Tel.: +91-22-4260 7000 • Fax : +91-22-4260 7070 • E-mail : contact@mpil.in • website: www.mpil.in

Works : J-86, MIDC Tarapur, Boisar, Dist. Thane - 401 506, Maharashtra.
Tel.: 02525-270 801 / 2 • Fax : 02525-270 803

AIRPORTS • POWER PLANTS • INFRASTRUCTURE • SOLAR POWER • INDUSTRIAL SHEDS & WAREHOUSES